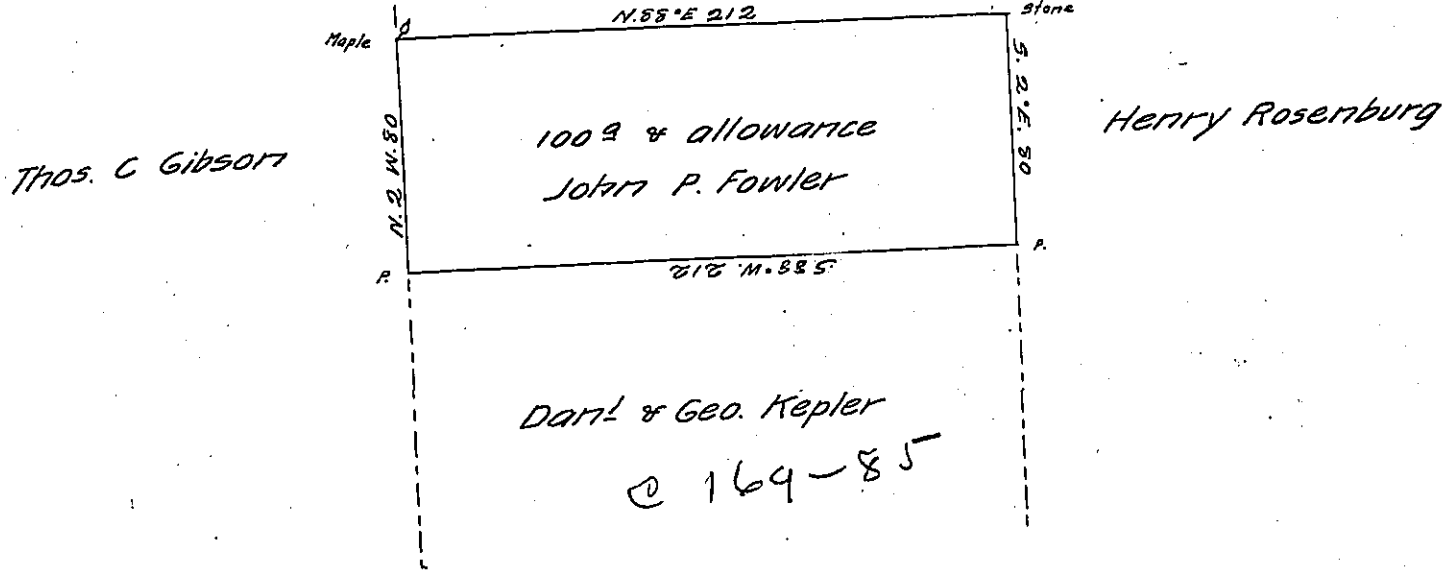


Page 220
George C. Fowler



Survey of one hundred acres and Allowance of Land situated in
in Allegheny township Butler County, surveyed April tenth A. D. 1850 at the
instance of John P. Fowler by virtue of his settlement and improvement
agreeably to the lines corners & adjoiners and parties interested

Butler March 23 1857

Hugh Mc Kee

Hon. J. P. Brawley Esq. Surveyor General

County Sur.

I, David Scott, County Surveyor of Butler County do Certify the
Above to be a true and correct copy of a survey from the Book of Hugh
Mc Kee Ex. County Surveyor of this County, and from an Examination of
books and papers in my possession. The above tract of Land is yet
unpatented and the said John P. Fowler now owns it and no other
person claims it or any part of it

Witness my hand and seal

David Scott

day and date above given

County Surveyor

IN TESTIMONY that the above is a copy of the original remaining on file in
the Department of Internal Affairs of Pennsylvania, made
conformably to an Act of Assembly approved the 16th day of
February, 1833, I have hereunto set my Hand and caused
the Seal of said Department to be affixed at Harrisburg,
this twentieth day of December 1904

Loae D. ...
Secretary of Internal Affairs